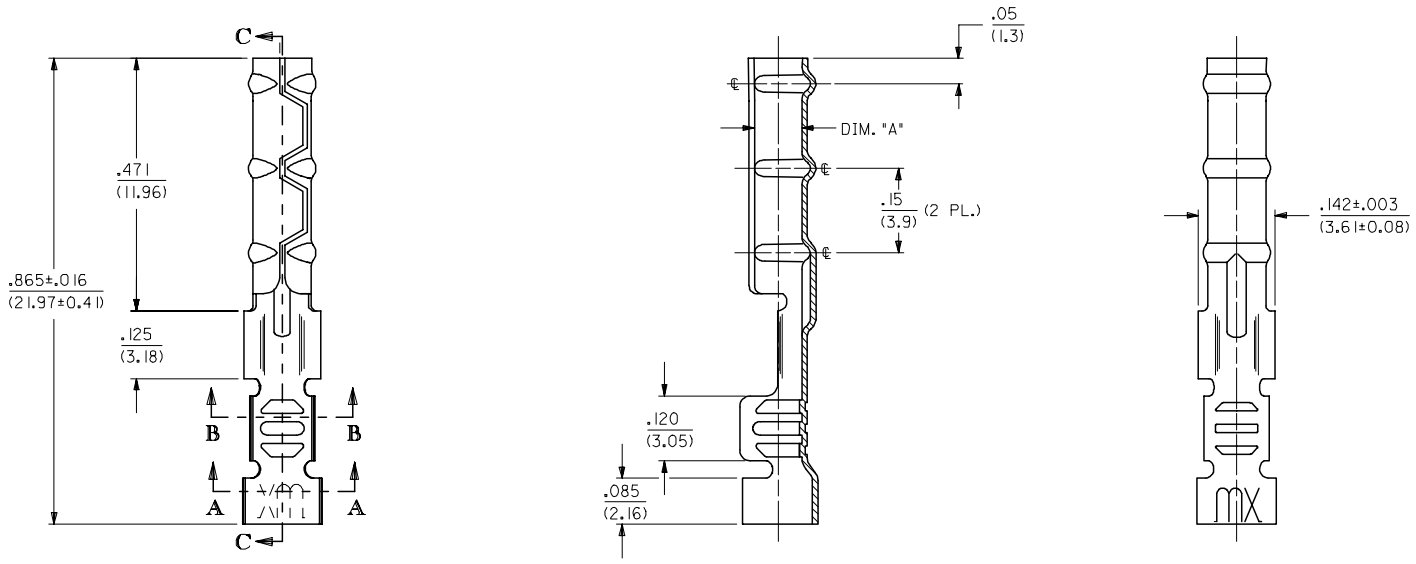


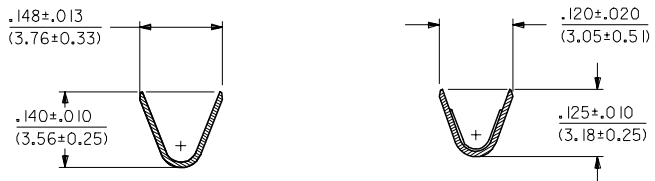
13 12 11 10 9 8 7 6 5 4 3 2 1

J I H G F E D C B A

1881-2\*\*\* TERMINAL SHOWN (16-24 AWG)  
SEE SHEET 2 FOR 1881-3\*\*\* TERMINAL



**SECTION C-C**



**SECTION A-A**

**SECTION B-B**

UPDATE TITLE BLOCK EC NO: UCP2006-0215 2005/08/05 DRAWN: JLONE 2005/08/10 CHKD: ADERR 2005/08/10 APPR: FSM TH 2005/08/10 REVISIONS L1	QUALITY SYMBOLS	$\nabla=0$ $\nabla=0$															
	GENERAL TOLERANCES (UNLESS SPECIFIED)	<table border="1"> <tr> <th></th> <th>mm</th> <th>INCH</th> </tr> <tr> <td>4 PLACES</td> <td>± .10</td> <td>± .004</td> </tr> <tr> <td>3 PLACES</td> <td>± .12</td> <td>± .005</td> </tr> <tr> <td>2 PLACES</td> <td>± .15</td> <td>± .006</td> </tr> <tr> <td>1 PLACE</td> <td>± .20</td> <td>± .008</td> </tr> </table>		mm	INCH	4 PLACES	± .10	± .004	3 PLACES	± .12	± .005	2 PLACES	± .15	± .006	1 PLACE	± .20	± .008
		mm	INCH														
	4 PLACES	± .10	± .004														
3 PLACES	± .12	± .005															
2 PLACES	± .15	± .006															
1 PLACE	± .20	± .008															
ANGULAR	±1/2°																
DRAFT WHERE APPLICABLE MUST REMAIN WITHIN DIMENSIONS																	

DIMENSION STYLE	IN/MM
DRAWN BY	JWC
DATE	3/11/91
CHECKED BY	RW
DATE	3/11/91
APPROVED BY	JWF
DATE	3/11/91
MATERIAL NO.	SEE CHART
DOCUMENT NO.	SD-1881-*

SCALE	6:1
DESIGN UNITS	INCH
THIRD ANGLE PROJECTION	

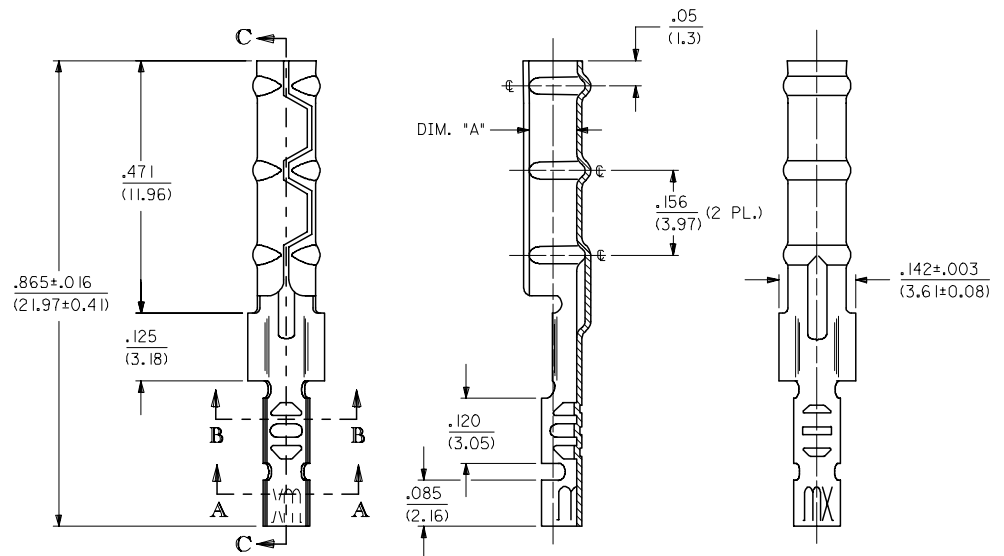
CRIMP TERMINAL SOCKET, CLASPCON	
MOLEX INCORPORATED	
SHEET NO. 1 OF 2	DOCUMENT NO. SD-1881-*

2	L1
1	L1
SHT/REV	

12 11 10 9 8 7 6 5 4 3 2 1

CHART			
PART NUMBER	ENG. NUMBER	DIMENSION "A" (DIA.)	
02-08-1102	1881-2L1A	.085/.090 (2.16/2.29)	
02-08-1101	1881-2C1A		
02-08-1106	1881-2L1B	.083/.088 (2.11/2.24)	OBSOLETE
02-08-1105	1881-2C1B		OBSOLETE
02-08-1104	1881-3L1A	.085/.090 (2.16/2.29)	
02-08-1103	1881-3C1A		
02-08-1107	1881-4C1A	.085/.090 (2.16/2.29)	OBSOLETE
02-08-1108	1881-4L1A		OBSOLETE

1881-3\*\*\* TERMINAL SHOWN (24-30 AWG)  
SEE SHEET 1 FOR 1881-2\*\*\* TERMINAL



**LEGEND**

1881-\*\*\*  
 CRIMP STYLE  
 2 = 16-24 AWG  
 3 = 24-30 AWG  
 4 = 22 AWG  
 BARREL I.D.  
 A = .085/.090 BARREL I.D.  
 FORM  
 L = LOOSE  
 C = CHAIN  
 FINISH  
 (\*" PRECEEDING FINISH NO. DESIGNATES PREPLATED MATERIAL)  
 1 = P901 - HOT TIN DIP: .000020/(0.0005) MIN.

- NOTES:
1. MATERIAL: CARTRIDGE BRASS
  2. FINISH: SEE LEGEND
  3. PRODUCT SPECIFICATION: N/A
  4. PACKAGING SPECIFICATION: N/A
  5. 1881 "CLASPCON" SERIES TERMINAL WITH THE STANDARD BARREL I.D. IS INTENDED FOR MATING TO .093/(2.36) DIA. P.C. BOARD PINS.
  6. INITIAL EXTRACTION FORCE TO BE 4.0±1.5 LBS. FROM AN .093/.092 / (2.36/2.34) DIA. PIN AND 2 LBS. MIN. AFTER THE 10TH EXTRACTION ON STANDARD BARREL I.D.

OBSOLETE 02-08-1102 EC NO: UCP2006-0215 DRAWN: JLONE 2005/08/05 CHKD: ADERR 2005/08/10 APPR: FSM TH 2005/08/10 REV L1	QUALITY SYMBOLS ▽=0 ▽=0	GENERAL TOLERANCES (UNLESS SPECIFIED)	DIMENSION STYLE IN/MM	SCALE 6:1	DESIGN UNITS INCH	THIRD ANGLE PROJECTION
		mm INCH	DRAWN BY DATE JWC 3/11/91	TITLE CRIMP TERMINAL SOCKET, CLASPCON		
		4 PLACES ± --- ± --- 3 PLACES ± --- ± .010 2 PLACES ± 0.25 ± .014 1 PLACE ± 0.36 ± --- ANGULAR ±1/2°	CHECKED BY DATE RW 3/11/91	MOLEX INCORPORATED		
		DRAFT WHERE APPLICABLE MUST REMAIN WITHIN DIMENSIONS	APPROVED BY DATE JWF 3/11/91			